



Häfele Slido Classic 40 IF C

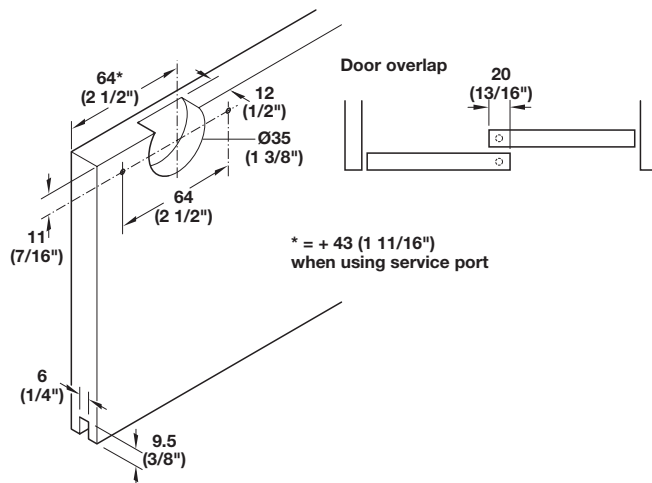
With soft closing mechanism (optional)

Door weight: max. 40 kg (88 lbs.)
Door height: max. 2200 mm (7' 2 5/8")
Door width: max. 1250 mm (4' 1 3/16")
Door thickness: 16 – 19 mm (5/8" – 3/4")
Door width: >370 mm (14 9/16") with soft closing mechanism on one side, >550 mm (21 5/8") with soft closing mechanism on both sides
Height adjustment: +/- 2 (1/16") mm on running gear using adjusting wheel

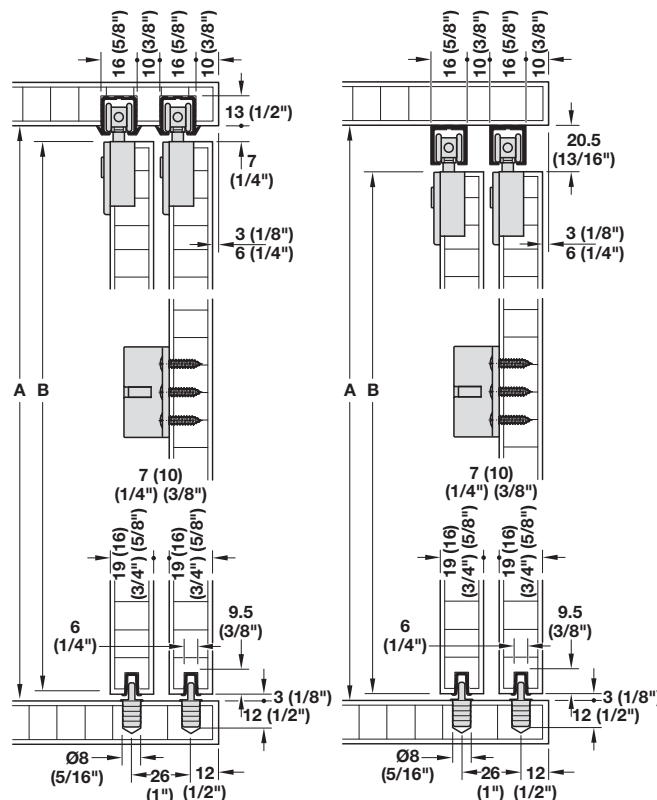
- Mounts quickly and easily
- Space saving compared to hinged doors
- Soft closing feature prevents door slam and helps eliminate noise



Drilling pattern



Dimensions in mm
Inches are approximate



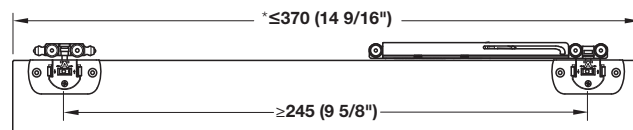
Groove-mounted track

A = internal cabinet height
B = internal cabinet height minus 10 mm (13/32")

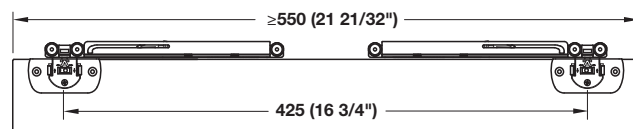
Screw-mounted track

A = internal cabinet height
B = internal cabinet height minus 23.5 mm (15/16")

soft&silent

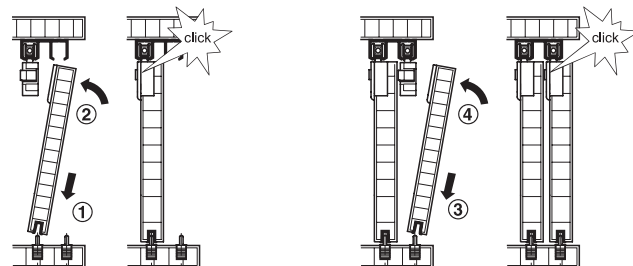


Minimum door width with one soft closing mechanism.
* Add 43 mm (1 3/16") when using service port.



Minimum door width with two soft closing mechanisms.

Door panel installation



Häfele Slido Classic 40 IF C Set

	Item No.
For 2 doors, with track stopper	402.33.026
For 2 doors, with single soft closer on each door	402.33.027
For 2 doors, with dual soft closer on each door	402.33.028

Note

Please order upper running track and lower guide channel separately.

Set Components

	Description	Material	Color/Finish	Qty. 402.33.026	Qty. 402.33.027	Qty. 402.33.028	Item No.
	Housing, for screw mounting to door	Zinc die-cast	-	4 pcs.	4 pcs.	4 pcs.	402.30.421
	Running gear with ball bearing, clips into housing	Zinc alloy/Plastic	gray	4 pcs.	2 pcs.	-	402.30.128
	Running gear with soft closing mechanism and ball bearing, clips into housing	Zinc alloy/Plastic	gray	-	2 pcs.	4 pcs.	402.30.124
	Track stopper	Plastic	gray	4 pcs.	2 pcs.	-	402.32.304
	Door stopper for soft closing mechanism, mounts in upper running tracks	Zinc die-cast	-	-	2 pcs.	4 pcs.	402.30.321
	Guide, for press fitting	Plastic	gray	2 pcs.	2 pcs.	2 pcs.	402.30.220
	Door stop with buffer, mounts to the front sliding door	Plastic	gray	1 pc.	1 pc.	1 pc.	402.30.320
	Service port for upper running track (to access running gear after installation)	Plastic	gray	2 pcs.	-	-	402.33.403
	Mounting aid for track installation	Plastic	red	1 pc.	1 pc.	1 pc.	402.33.404

Individual Components

	Description	Min. cabinet top thickness	Material	Finish/Color	Length	Item No.
	Single upper running track, for 16 mm (5/8") groove	glue mounting 19 (3/4")	Aluminum	bright	2.5 m (8' 2 7/16")	402.33.642
	Note Optional screw holes for 3.0 mm countersunk screws are included in track	screw mounting 30 (1 3/16")			3.5 m (11' 5 13/16")	402.33.643
	Double upper running track, for 16 mm (5/8") groove	glue mounting 19 (3/4")	Aluminum	bright	2.5 m (8' 2 7/16")	402.33.652
	Note Optional screw holes for 3.0 mm countersunk screws are included in track	screw mounting 30 (1 3/16")				
	Single upper running track, for screw mounting	-	Aluminum	silver colored anodized	2.5 m (8' 2 7/16")	402.30.642
	Double upper running track, for screw mounting	-	Aluminum	silver colored anodized	2.5 m (8' 2 7/16")	402.30.652
	Lower guide channel, for glue mounting into 6 mm (1/4") groove	-	Plastic	gray	2.5 m (8' 2 7/16")	402.30.802
					3.5 m (11' 5 13/16")	402.30.803
	Flathead screw 3.0 x 1/2", Phillips drive, for screw mounted upper running tracks	-	Steel	zinc-plated	12 mm (1/2")	402.33.010

Note

Polyurethane glue recommended for groove mounted tracks.

Planofit Straightening Fitting page 7.82

Dimensional data not binding. We reserve the right to alter specifications without notice.