



## EKU Clipo 26 H Inslide

Maximum door height: 2200 mm (7' 2 5/8")

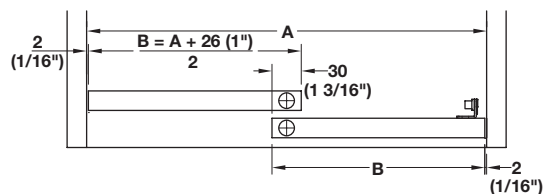
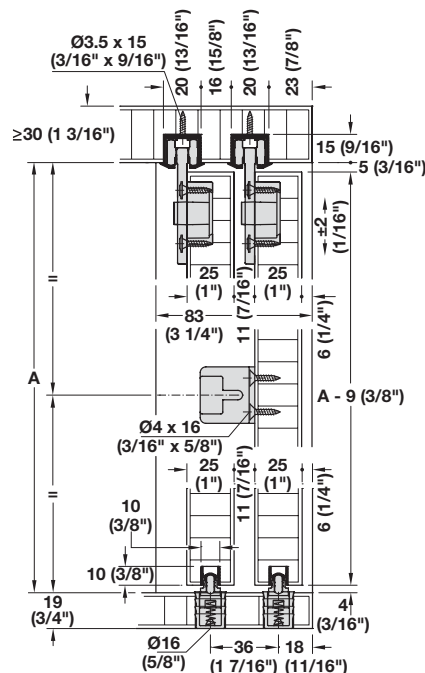
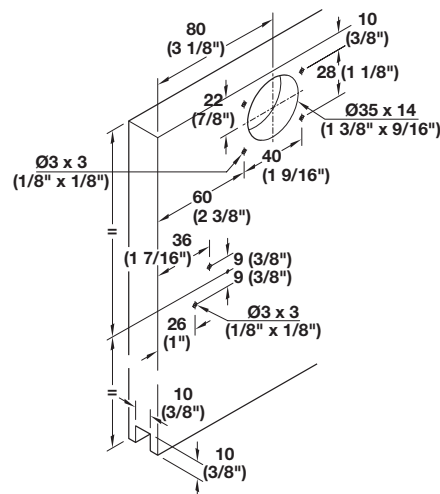
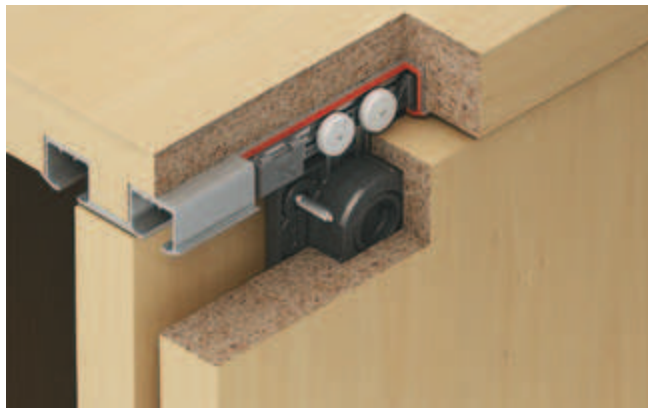
Maximum door weight: 26 kg (57 lbs.)

Maximum door width: 1000 mm (3' 3 3/8")

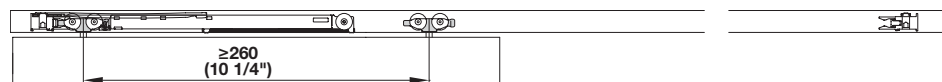
Door thickness: 19 mm – 25 mm (3/4" – 1")

Height adjustment: +/-2 mm (1/16")

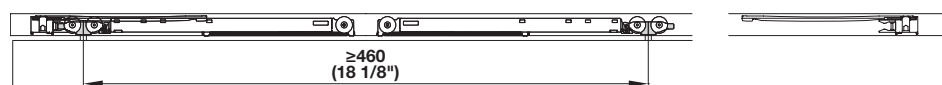
- Running gear: two plastic rollers
- Optional soft close mechanism can be inconspicuously integrated into the track so it is not visible and is protected from damage
- Rattle-free floor guide
- No guide rails in the bottom of the cabinet
- Tool-less clip-on hardware allows for quick and easy door mounting



### Soft Close Mounting

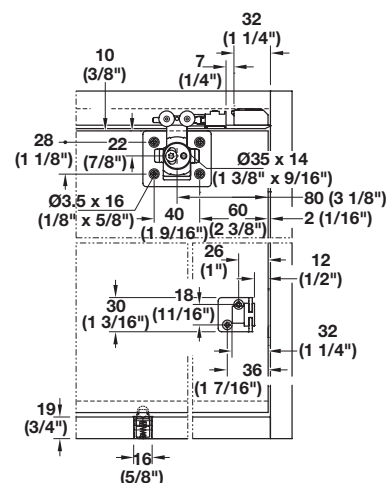


Door with one Soft Close mechanism.



Door with two Soft Close mechanisms.

Dimensions in mm  
Inches are approximate



Dimensional data not binding. We reserve the right to alter specifications without notice.



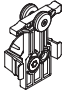
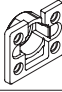
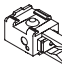

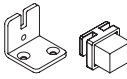
## EKU Clipo 26 H Inside Set

	Item No.
For 2 sliding doors	405.00.004

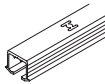
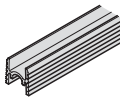

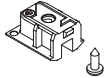
### Note

The complete set is always delivered without upper track, lower guide channel, soft close mechanism and service port, please order separately.

### Set Components

	Description	Material	Finish/Color	Qty.
	Running gear	Plastic	anthracite	4 pcs.
	Housing, for screw mounting	Plastic	anthracite	4 pcs.
	Track stopper, for upper track	Plastic	gray	4 pcs.
	Guide, for mounting in drilled holes	Plastic	anthracite	2 pcs.
	Soft stop, for screw mounting to the back of the front door	Plastic	gray	1 set

### Individual Components

	Description	Material	Finish/Color	Length	For Door Weights	Item No.
	Upper track, pre-drilled, for screw mounting	Aluminum	anodized silver	2.5 m (8' 2 7/16")	-	405.00.622
				3.5 m (11' 5 13/16")	-	405.00.623
	Lower guide channel, for glue mounting	Aluminum	mill finish	2.5 m (8' 2 7/16")	-	405.04.251
				3.5 m (11' 5 13/16")	-	405.04.351
	Soft Close mechanism, optional screw-mounting to housing	Plastic	gray	-	up to 33 lbs.	405.10.073
	One set includes two mechanisms. Two sets are required for dual soft closing of two doors.				34 - 57 lbs.	405.10.074
					57 - 79 lbs.	940.48.045
	Service port for upper track (to access running gear after installation)	Plastic	gray	-	-	405.00.072

Dimensional data not binding. We reserve the right to alter specifications without notice.