



**TRADEMARK
HARDWARE**

WORLD OF QUALITY HARDWARE

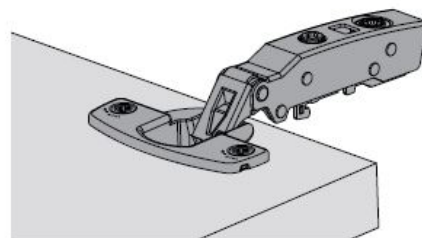
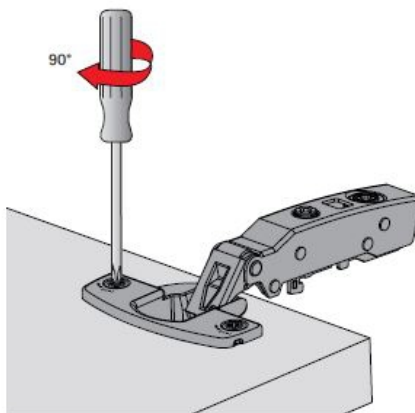
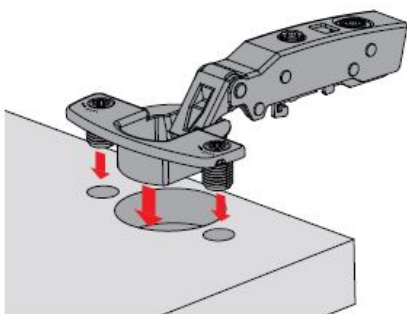
Installation Guide

Flash fast assembly

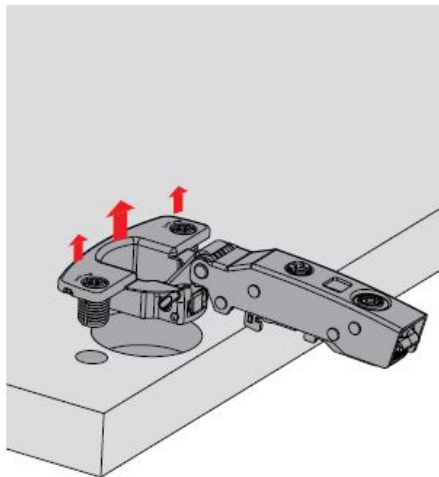
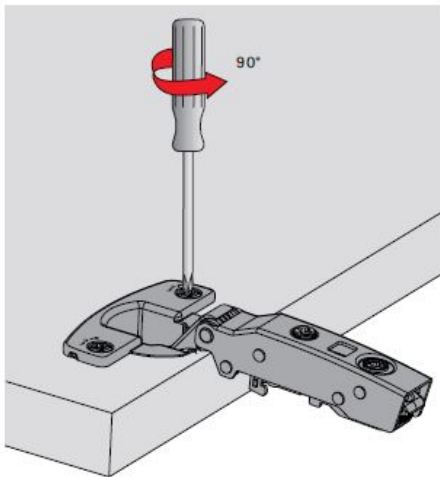
Flash fast hinge assembly and removal merely requires the use of a standard crosshead screwdriver PZ 2. The socket securely

expands in the wood simply by turning the Flash screw through 90°. A symbol shows that the hinge is locked in place.

Assembly



Removal



SKU: HS8645i



www.tmhardware.com



845-388-1300



845-388-1388



sales@tmhardware.com



**TRADEMARK
HARDWARE**

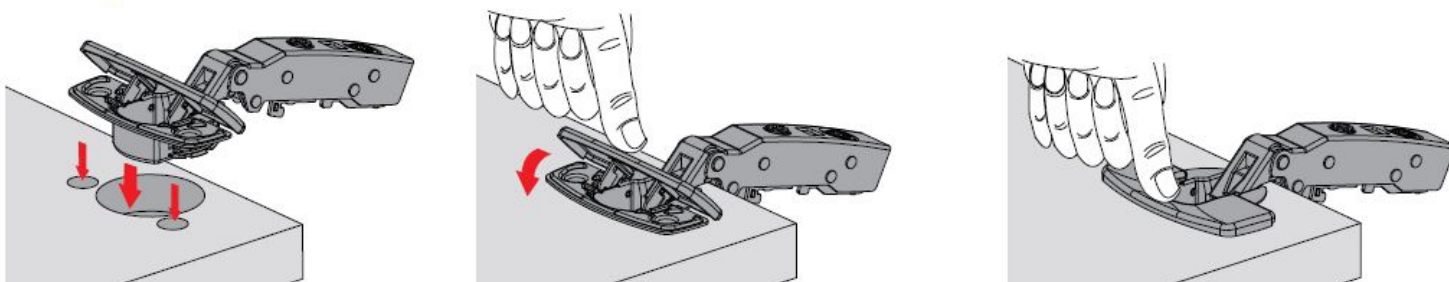
WORLD OF QUALITY HARDWARE

Installation Guide

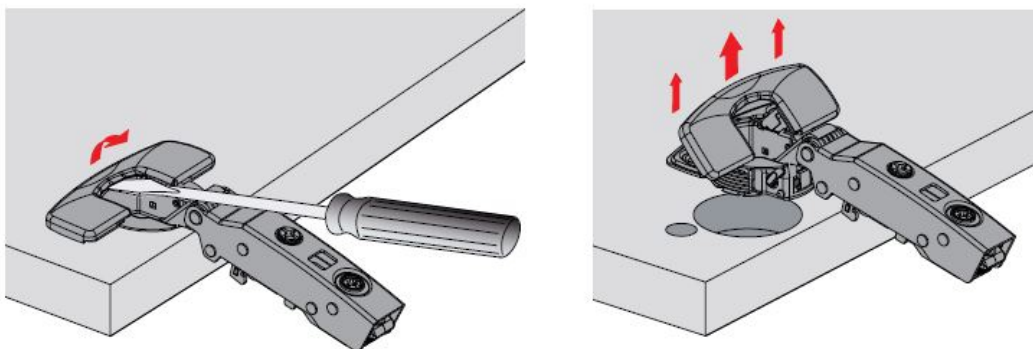
Fix toolless fast assembly

Toolless assembly of the Sensys Fix hinge in the door as well as removal (which can only be done with a screwdriver for safety reasons) is illustrated in the following sequence of pictures.

Assembly



Removal



SKU: HS8645i



www.tmhardware.com



845-388-1300



845-388-1388



sales@tmhardware.com



**TRADEMARK
HARDWARE**

WORLD OF QUALITY HARDWARE

Installation Guide

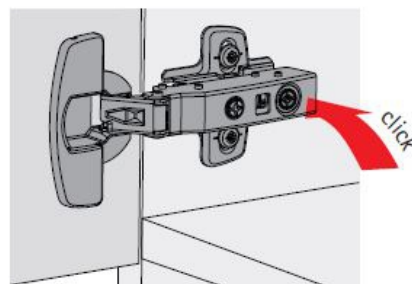
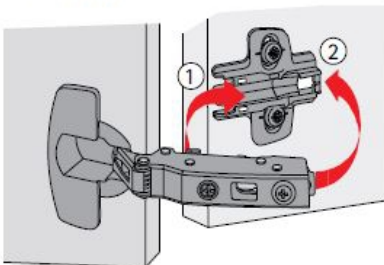
Toolless fast assembly

Toolless fast assembly is distinguished by ergonomic handling. To begin with, all hinges are pushed onto the mounting plate from the front ①. The hinge arms are then lightly pressed onto the mounting plate so they

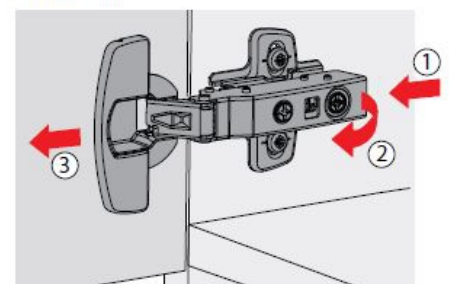
engage with an audible click ②. The hinge arm is now securely attached to the plate at five points and with zero play. As a general rule, the hinges are clipped onto corpus from top to bottom.

Hinges are removed in the opposite order, i.e. from bottom to top. The rear part of the hinge is pressed by thumb against the mounting plate while pushing on the release catch ①. The hinge arm is now lifted off the mounting plate ② and the door can be removed towards the front ③.

Assembly



Removal



SKU: HS8645i



www.tmhardware.com



845-388-1300



845-388-1388



sales@tmhardware.com